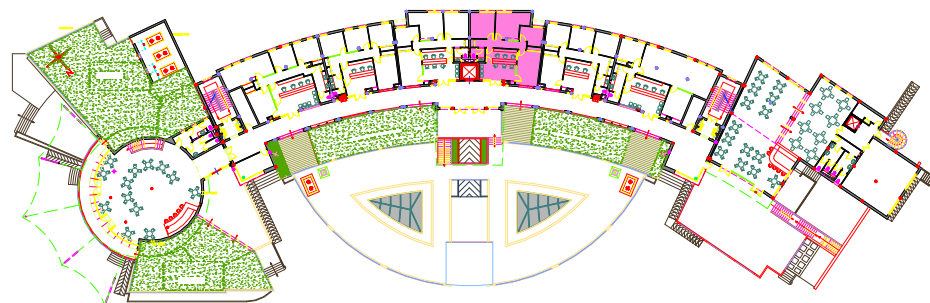
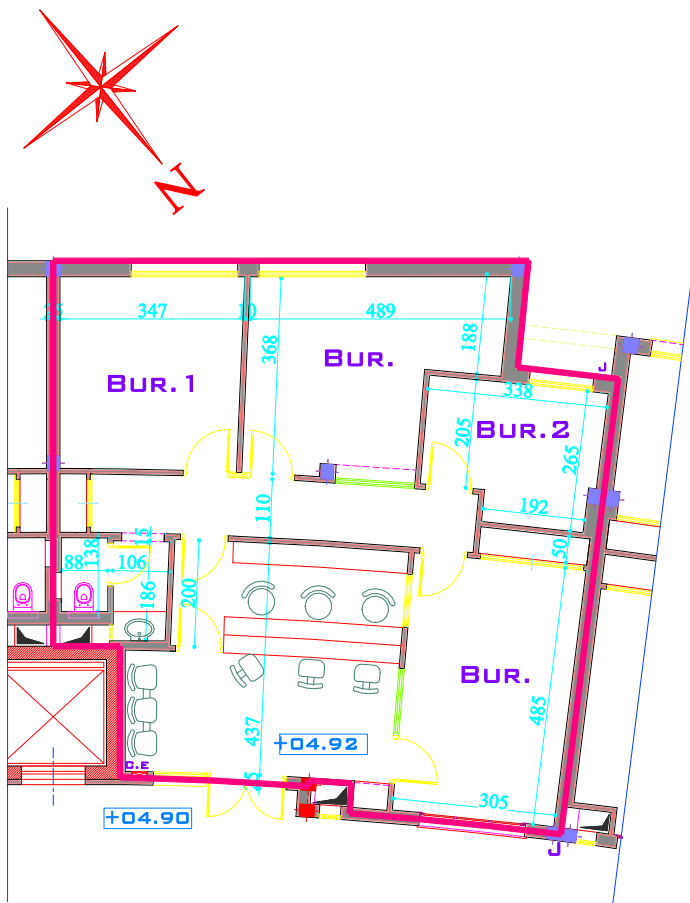


Société de Promotion Immobilière Pour la Vente et la Location
PROJET DE CONSTRUCTION D'UN CENTRE DE VIE - MGHIRA III



LOCAL 22

Niveau:	1er Etage
Surface Utile:	86.30 m ²
Surf H. oeuvre :	96.36 m ²
Surface Commune:	31.72 m ²
Surf. Vendable:	128.08 m ²